

Sample ID	User ID	Date	Time	ng/ul	A260	A280	260/280	260/230	Constant	Cursor Pos.	Cursor abs.	340 raw
S0	Ani	15.06.2010	15:31	413,14	10,329	5,043	2,05	1,63	40,00	230	6,320	0,013
CSE	Ani	15.06.2010	15:33	458,60	11,465	5,585	2,05	1,88	40,00	230	6,087	0,022

Report

Nucleic Acid

15.06.2010 15:35

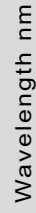
Exit

CS E

Plots/Set

20

Legend



Cursor nm

260

Cursor Abs.

11.438

[illegible]

Sample Information

Overlay control

Clear graph each Sample

Sample Type

RNA-40

Sample ID

S0

Sample #

1

λ

230

nm

Abs.

6,320

A-260 10 mm path

10,329

A-280 10 mm path

5,043

260/280

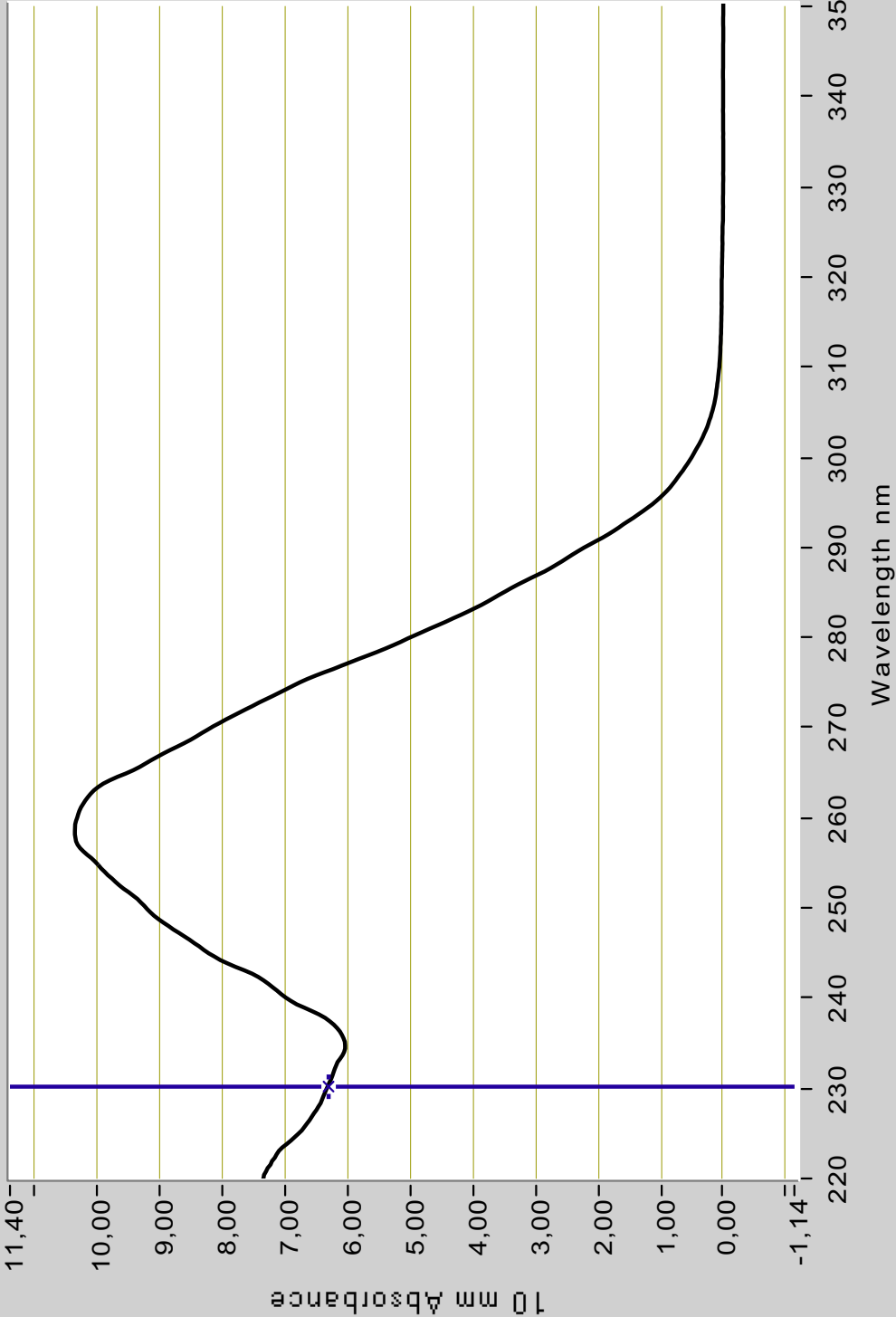
2,05

260/230

1,63

413,1

ng/uL



Overlay control

Clear graph each Sample

Sample Type

RNA-40

Sample ID

CSE

Sample #

2

λ

230

nm

Abs.

6,087

A-260 10 mm path

11,465

A-280 10 mm path

5,585

260/280

2,05

260/230

1,88

458,6

ng/uL

